



## District Scale Opportunity in the Wawa Mining Camp

### Golden Sky Project

Underexplored property hosting  
multiple gold structures between  
two active producers

Investor Presentation | February 2024





## Forward Looking Information

This presentation may include certain "forward-looking statements" within the meaning of applicable Canadian securities legislation. All statements, other than statements of historical fact, included herein, including, without limitation, statements regarding future plans and objectives of Angus Ventures Inc. ("the Company"), future opportunities and anticipated goals, the company's portfolio, treasury, management team, timetable to permitting and production and the prospective mineralization of the properties, are forward-looking statements that involve various risks, assumptions, estimates and uncertainties. Generally, forward-looking information can be identified by the use of forward-looking terminology such as "seeks", "believes", "anticipates", "plans", "continues", "budget", "scheduled", "estimates", "expects", "forecasts", "intends", "projects", "predicts", "proposes", "potential", "targets" and variations of such words and phrases, or by statements that certain actions, events or results "may", "will", "could", "would", "should" or "might", "be taken", "occur" or "be achieved". There can be no assurance that such statements will prove to be accurate, and actual results and future events could differ materially from those anticipated in such statements. Forward-looking information is subject to known and unknown risks, including but not limited to: an inability to complete the business combination; general business, economic, competitive, geopolitical and social uncertainties; delays in obtaining or failures to obtain required governmental, regulatory, environmental or other required approval; the actual results of current exploration activities; acquisition risks; and other risks of the mining and resource industry. Although the Company has attempted to identify important factors that could cause actual results to differ materially from those contained in forward-looking information, there may be other factors that cause results not to be as anticipated, estimated or intended. These statements reflect the current internal projections, expectations or beliefs of the Company are based on information currently available to the Company. The Company do not undertake to update any forward-looking information, except in accordance with applicable securities laws. The Company believe that the expectations reflected in those forward-looking statements are reasonable but no assurance can be given that these expectations will prove to be correct and such forward-looking statements included in this presentation should not be unduly relied upon by investors as actual results may vary. Unless required to be updated pursuant to securities laws, these statements speak only as of the date of this presentation and are expressly qualified, in their entirety, by this cautionary statement.

Although the Company has attempted to identify important factors that could cause actual results to differ materially, there may be other factors that cause results not to be as anticipated, estimated or intended. There can be no assurance that such statements will prove to be accurate as actual results and future events could differ materially from those anticipated in such statements. The Company disclaims any intention or obligation to update or revise any forward-looking statements, whether as a result of new information, future events or otherwise, other than as required by applicable law. Accordingly, readers should not place undue reliance on forward-looking statements and trading in securities of the Company should be considered highly speculative. All scientific and technical information contained in this presentation has been prepared by, or under the supervision of, Breanne Beh, vice president of exploration for the Company and a qualified person as defined by NI 43-101, Standards of Disclosure for Mineral Projects.

Historical assays contained in this Presentation have not been confirmed by the Company, are of uncertain QA/QC standards and should not be relied upon. They are presented as a guide to future exploration.

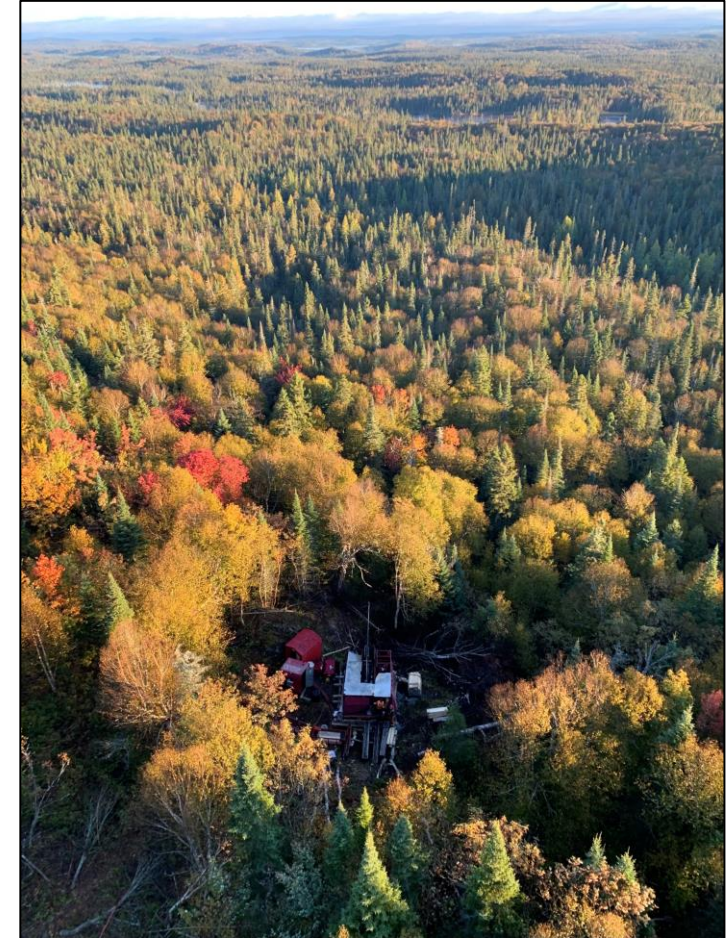
## Currency

Unless otherwise indicated, all dollar values herein are in Canadian \$.

# Gold Exploration in Wawa, Ontario



- ✓ **Experienced leadership team** responsible for two multi-million ounce gold discoveries, Borden Mine (Ontario) and Novador Project (Quebec)
- ✓ **Strategic district-scale land position in a proven Canadian gold district (Wawa, Ontario)**
  - Prolific mining camp, project located between Wesdome, Alamos and Argonaut operating mines
  - 100% owned, 290km<sup>2</sup> district-scale land package, first time it has all been consolidated into one project
  - Underexplored gold project with great access to existing infrastructure
- ✓ **Potential for high-grade, multi-million ounce gold deposits**
  - Area distinguished by multiple, thick, continuous gold zones with potential for high-grade mineralization similar to surrounding mines
  - Two advanced gold targets, including a new discovery by Angus (BIF Zone) and a historical resource (Dorset Zone) as well as multiple new exploration targets identified in 2022 and 2023 regional field programs
  - Ramping up drill programs to target higher grades at BIF and Dorset, as well as testing new areas including the Eagle River Splay Zone
- ✓ **Fully funded treasury with strong shareholder support:**
  - Strategic investment from Wesdome Gold Mines (TSX: WDO) completed in January 2024



## David Palmer

### Chairman & Director

- Current President & CEO of Probe Gold
- Former President & CEO of Probe Mines, sold to Goldcorp for \$526 million
- Director of Battle North Gold, acquired by Evolution Mining for \$343 million

## Breanne Beh

### President & CEO

- Over 10 years of experience in Gold exploration with producers and junior explorers
- Part of Borden Mine (Ontario) Discovery team
- Managed the 5.2Moz Novador gold project in Quebec

## Patrick Langlois

### Director

- 20+ years experience in corporate strategy, investment banking and M&A
- CFO of Probe Gold
- Former Vice President of Probe Mines

## Jamie Sokalsky

### Strategic Advisor

- Former President & CEO of Barrick Gold (2012-2014)
- Former CFO of Barrick Gold (1999-2012)

## Steve Burleton

### Director

- 30+ years experience as a senior executive, capital markets, corporate strategy and M&A
- Former CEO of GT Gold, acquired by Newmont for \$456 million in 2021
- Former Vice President of Richmond Mines, acquired by Alamos Gold for \$1 billion in 2017

## Dennis Peterson

### Director

- 30+ years of experience as a corporate securities lawyer in the small cap mining sector
- Founder of Peterson McVicar LLP in Toronto
- Director of Probe Gold

## David Cobbold

### Director

- 25+ years experience in financial services, investment banking and M&A
- Vice-Chairman, Metals & Mining at Macquarie Group
- Former Managing Director Global Mining Investment Banking at CIBC World Markets

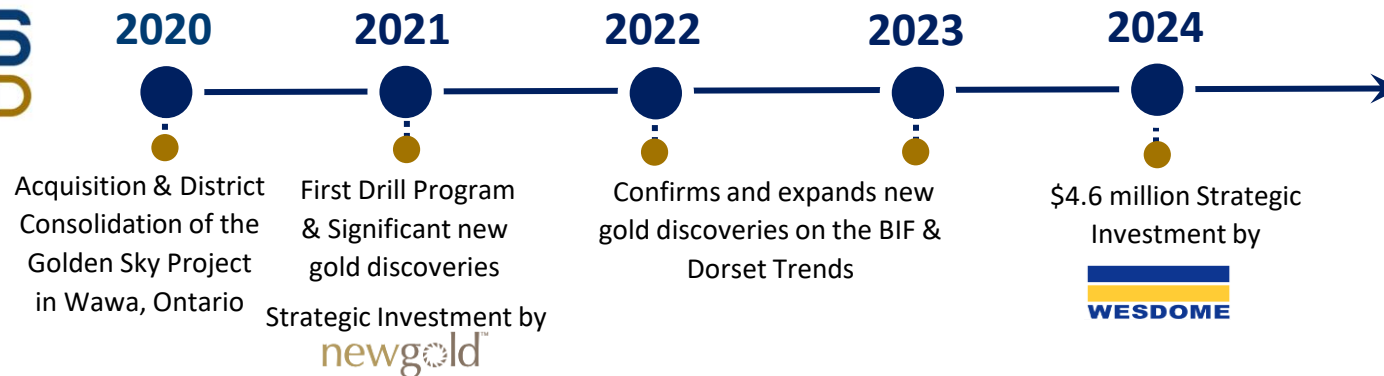
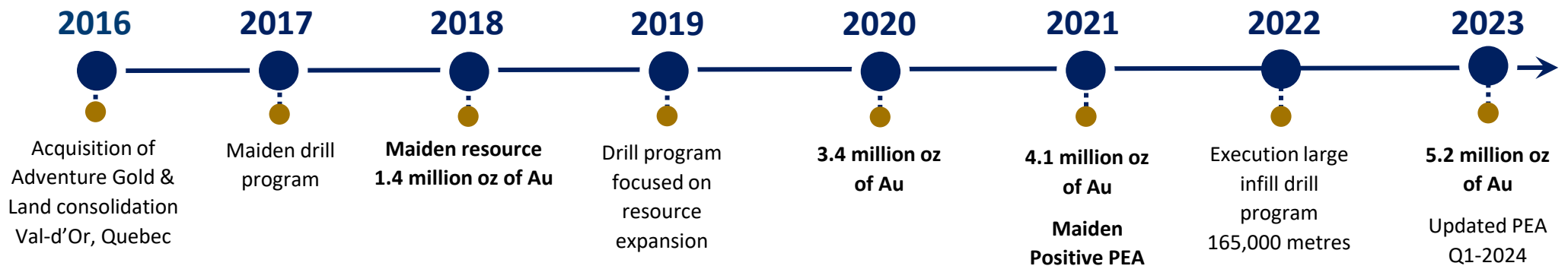
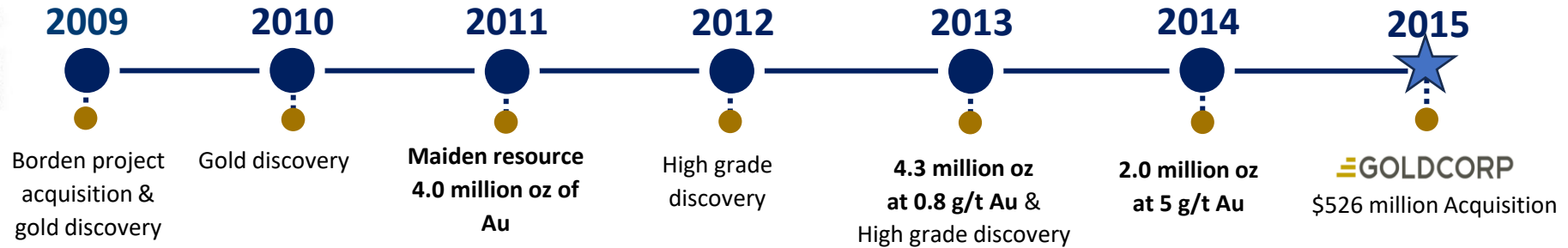
## Chris Chang

### Corporate Development

- 15+ years of experience in capital markets and corporate strategy in Metals & Mining
- Former Institutional Equities Specialist Sales and Mining Equity Research Analyst for investment banks

**Proven track record of creating value through discoveries & responsible for numerous successful M&A transactions**

# Proven Track Record of Success



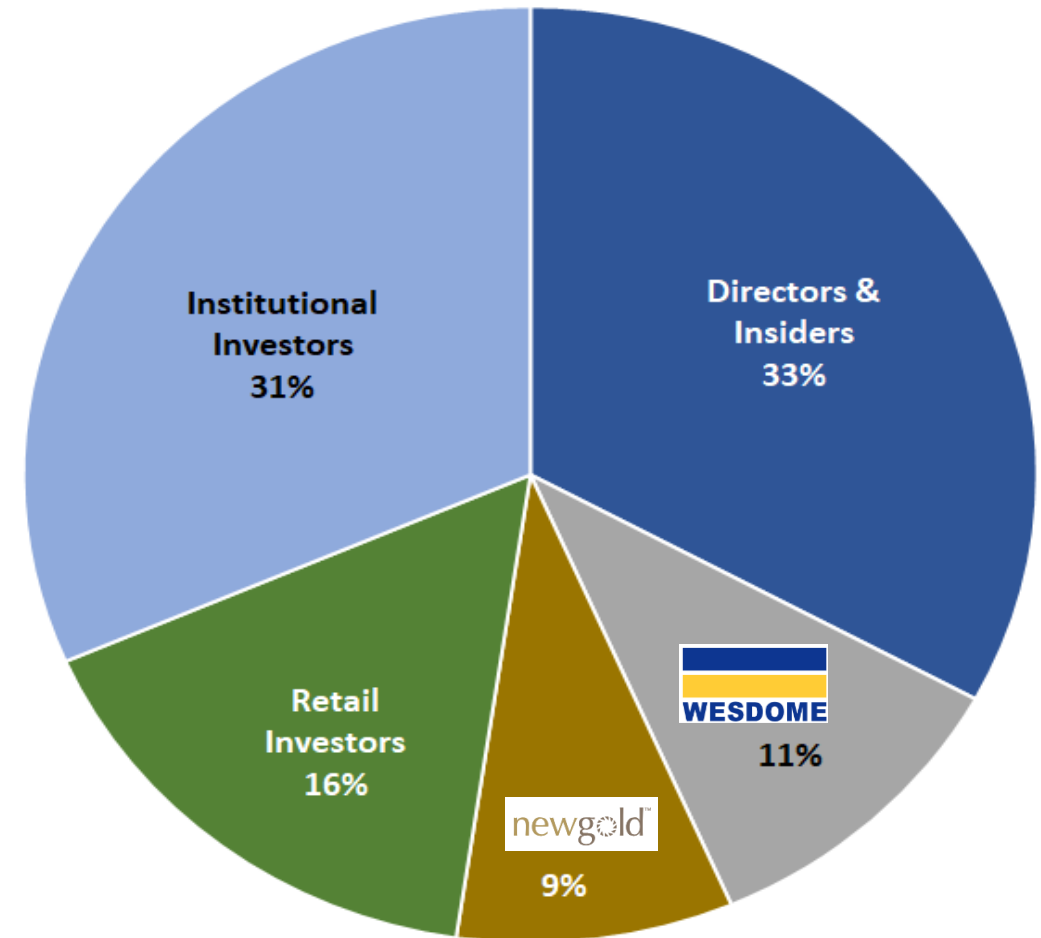
Well-Positioned for continued resource expansion and project de-risking

# Share Structure

## February 2024

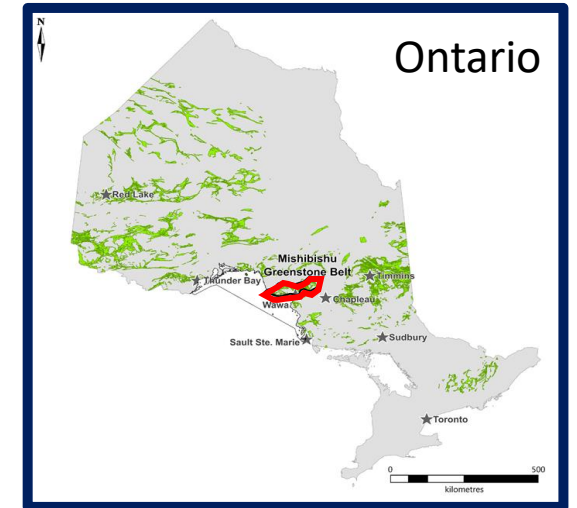
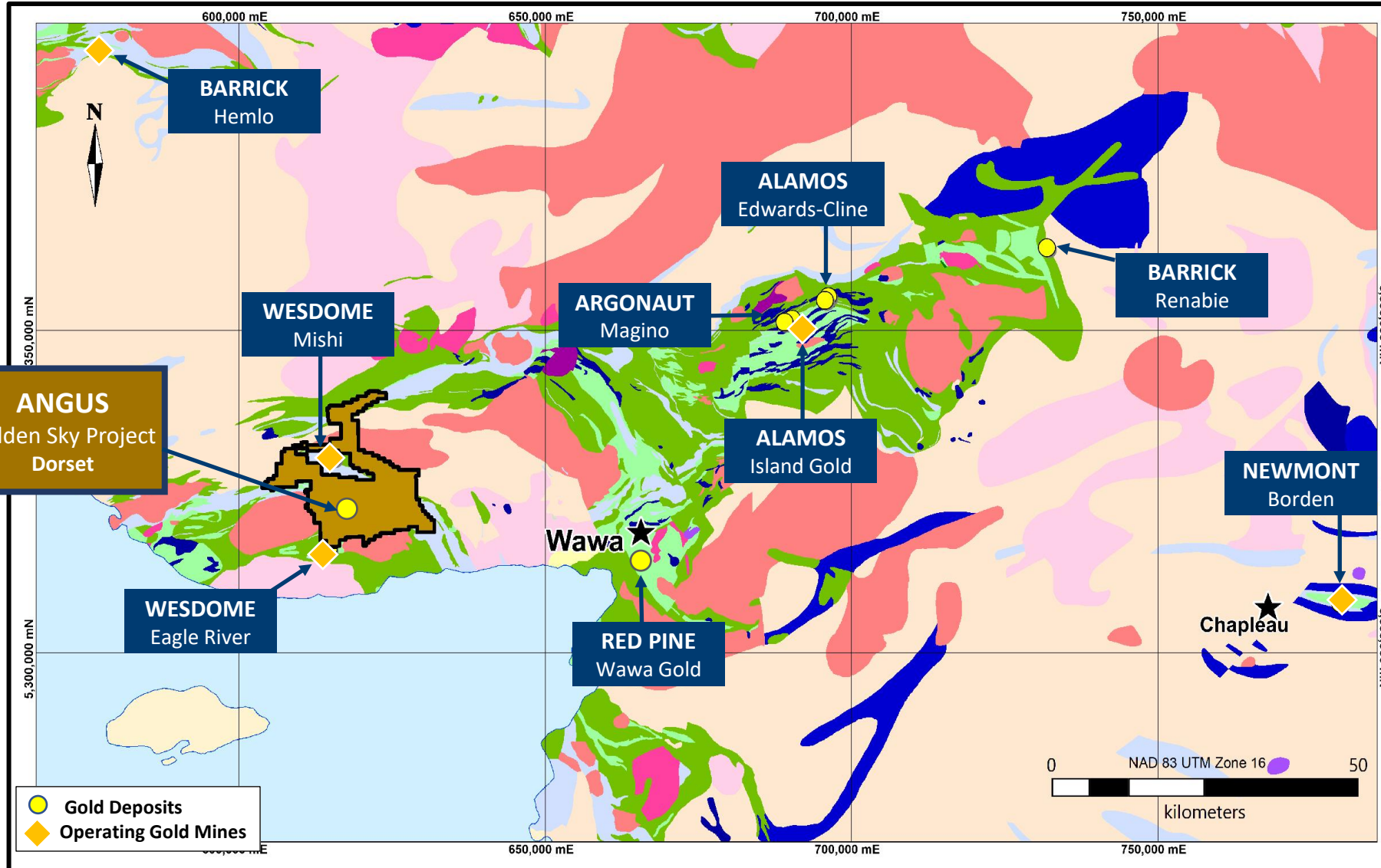
Share Price (C\$)	\$0.68
Shares Outstanding	54.9 million
Warrants	2.9 million
Options	3.1 million
Market Capitalization (C\$)	\$37.3 million
Cash (C\$)	\$8.6 million

**Well-funded & tightly held ownership with Management/Insiders 33%**





# Wawa Gold Camp – Proven District in Ontario, Canada



## Mishibishu Lake Greenstone Belt

Prolific Canadian greenstone belt 3 million ounces of gold produced to-date

One of fastest growing high grade gold districts in Canada

- ISLAND GOLD MINE – ALAMOS GOLD
- EAGLE RIVER MINE – WESDOME
- MAGINO MINE – ARGONAUT GOLD

# Golden Sky Project: Consolidation Strategy

**Consolidated 290 km<sup>2</sup> of under-explored property next to Eagle River Mine of Wesdome Gold**

## February 2020:

- Closed the acquisition of IAMGOLD claims
- Completed the acquisition of Exiro's claims

## March 2020:

- Closed the acquisition of Talisker's claims (Dorset & Alexandria)
- Staked 437 mining claims

**May 2020:** Completed the acquisition of Metalcorp & Healey claims

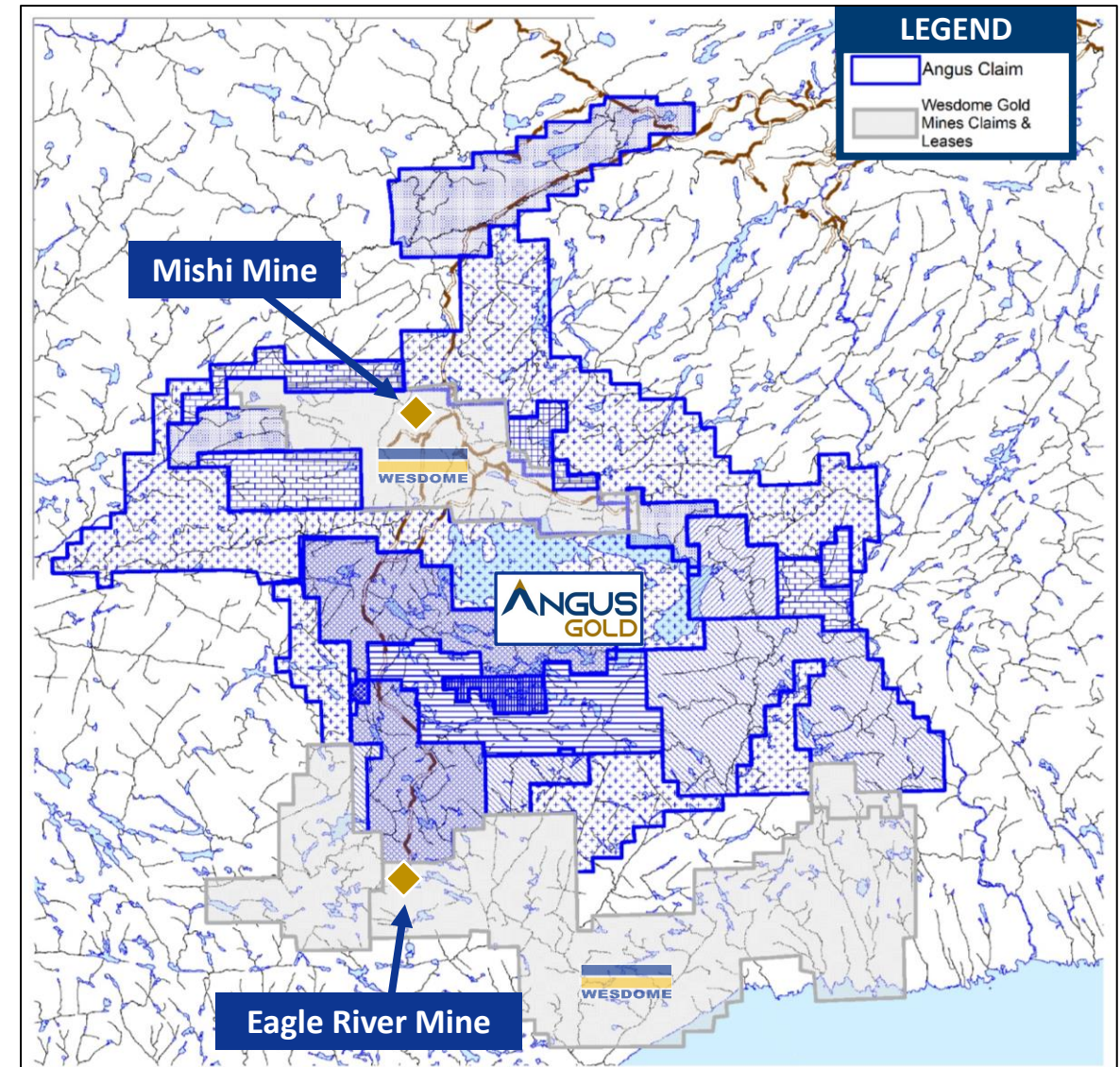
**July 2020:** Completed the acquisition of Precambrian claims

**November 2020:** Closed the acquisition of 3 properties from Argo Gold

**February – April 2022:** Completed the acquisition of 8 mining claims and staked an additional 50 claims

**January 2023:** Completed 100% earn-in in the IAMGOLD claims – Mishi property

**Spring – Fall 2023:** Angus map staked additional ground





# Golden Sky Project: Under-Explored Gold Trends

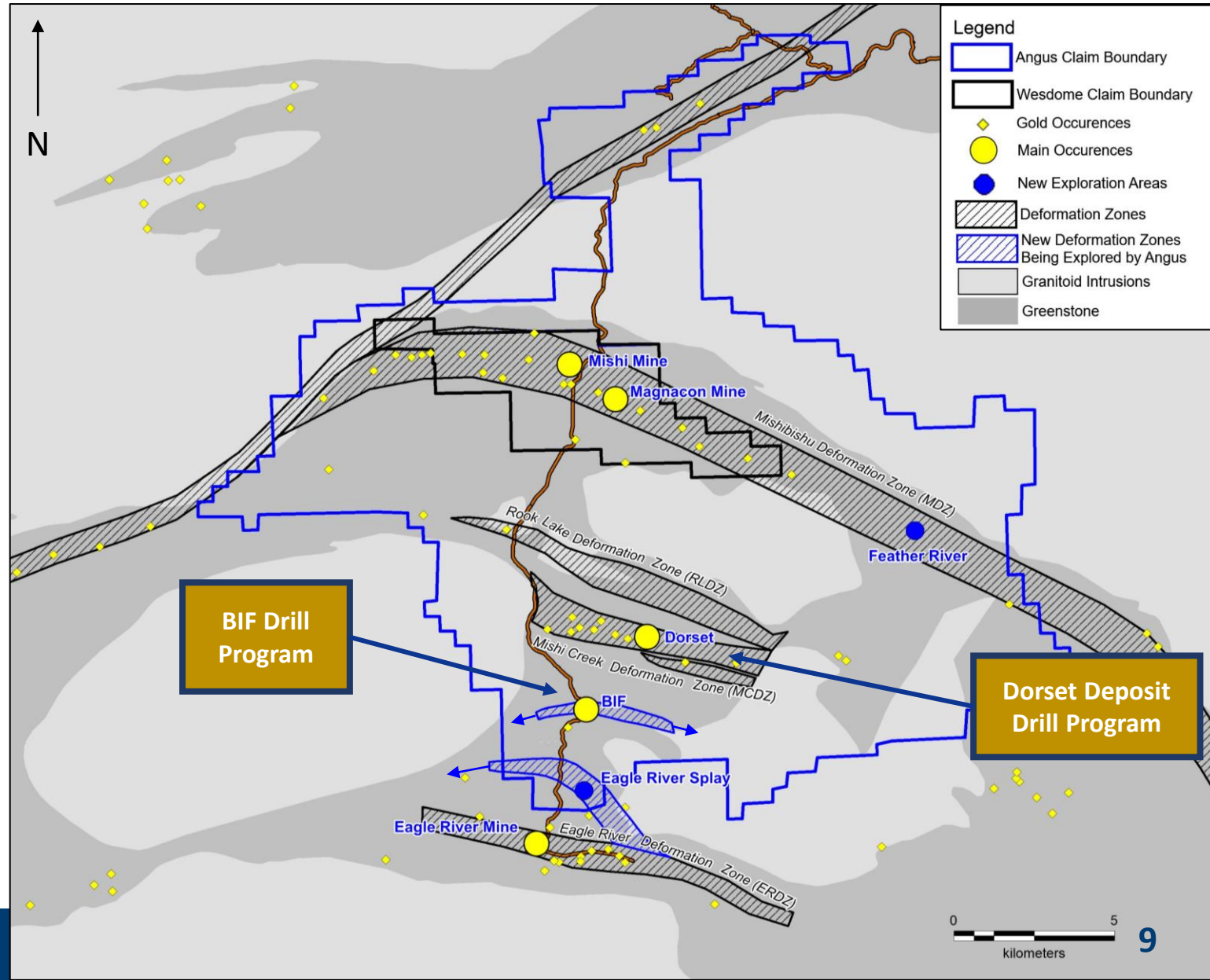
- Excellent exploration potential with existing gold resource on the Dorset trend

## DORSET DEPOSIT

Historical Mineral Resources Estimate  
 Indicated 40,000 oz @ 1.4 g/t Au  
 Inferred 180,000 oz @ 1.2 g/t Au

- Multiple gold-hosting shear zones on the property
- Two new gold-bearing shear zones already identified by Angus' first exploration programs
- Two advanced targets currently being explored with drilling:
  - **BIF Zone**
  - **Dorset Zone**
- New exploration targets being brought to drill-readiness: **Eagle River Splay** and **Feather River**

Angus → Adding value by methodically evaluating & drilling this under-explored land package

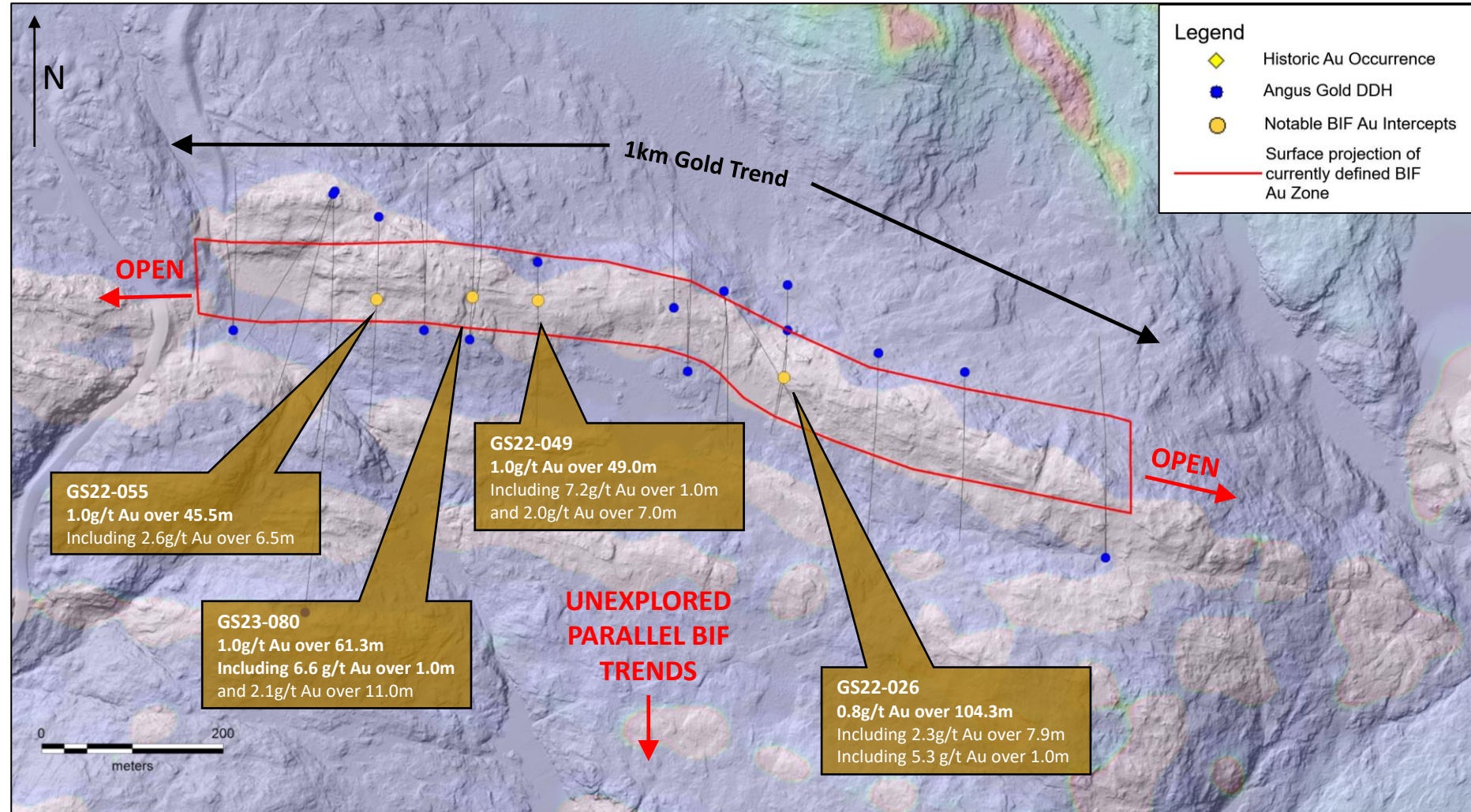


# BIF Discovery – Results Confirms Extensive Gold System

## Brand New Gold Horizon Confirmed Over 1.0 km Strike-Length

Hole	Highlight intersections
GS21-14	0.9 g/t Au over 61.3 metres
GS21-15	1.0 g/t Au over 18.7 metres
GS22-26	0.8 g/t Au over 104.3 metres
GS22-29	0.7 g/t Au over 35.9 metres
GS22-46	1.0 g/t Au over 22.0 metres
GS22-49	1.0 g/t Au over 49.0 metres
GS22-52	0.7 g/t Au over 44.9 metres
GS22-55	1.0 g/t Au over 45.5 metres
GS23-80	1.0 g/t Au over 61.3 metres
GS23-94	0.9 g/t Au over 31.1 metres

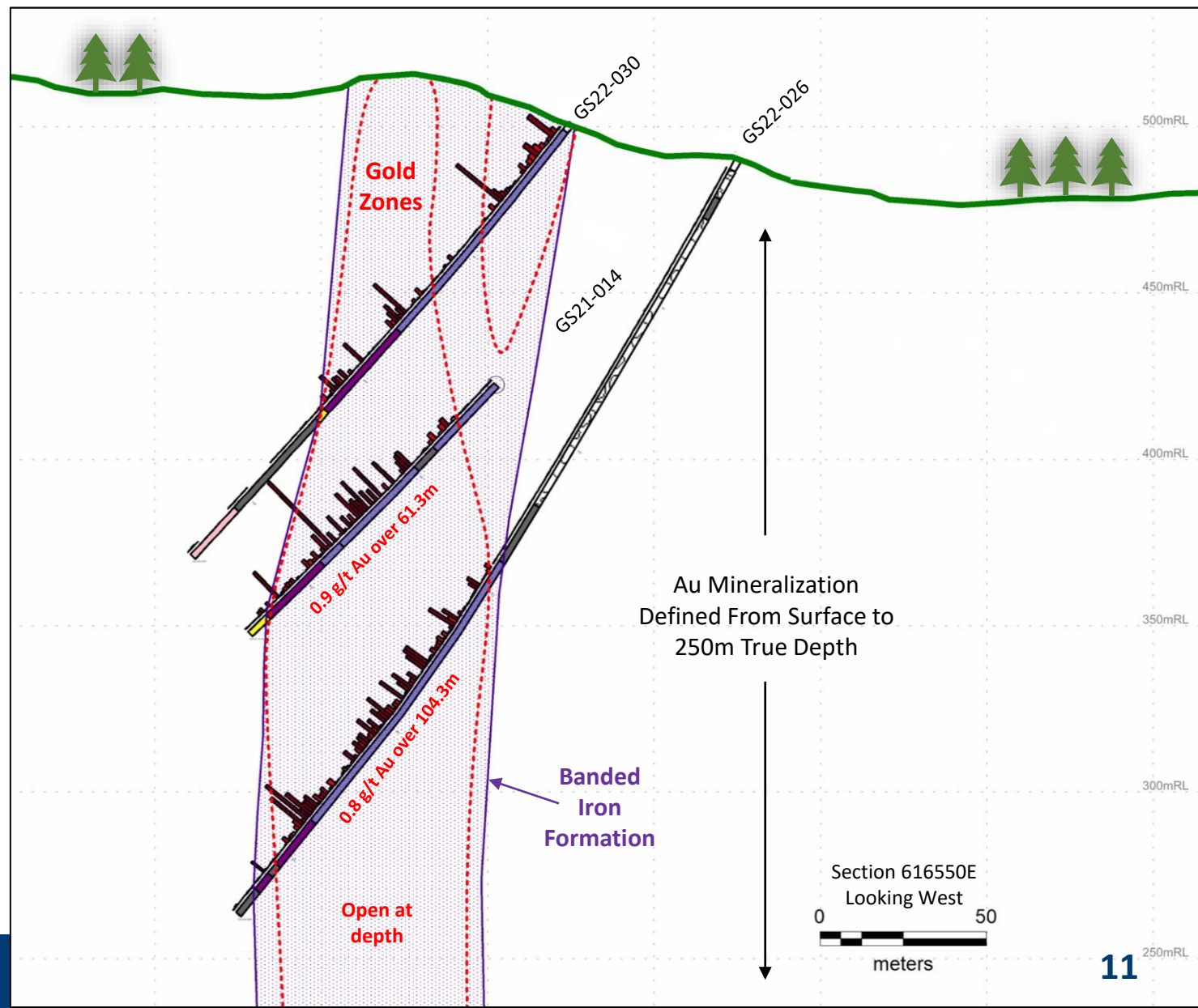
- Drill results indicate potential for higher-grade material
- BIF extends for 6 kilometres of strike-length with most still unexplored





# BIF Discovery – Results Confirms Extensive Gold System

- Thick consistent zones of mineralization
- Au mineralization defined from surface to 250m true depth
- Mineralized zone is roughly subvertical
- Mineralized zone open at depth and along strike



# BIF Hosted Gold Deposits

## Why are BIF hosted gold deposits attractive exploration targets?

- Multimillion ounce potential
- High-grade
- Extensive systems

## Notable BIF Hosted Gold Deposits

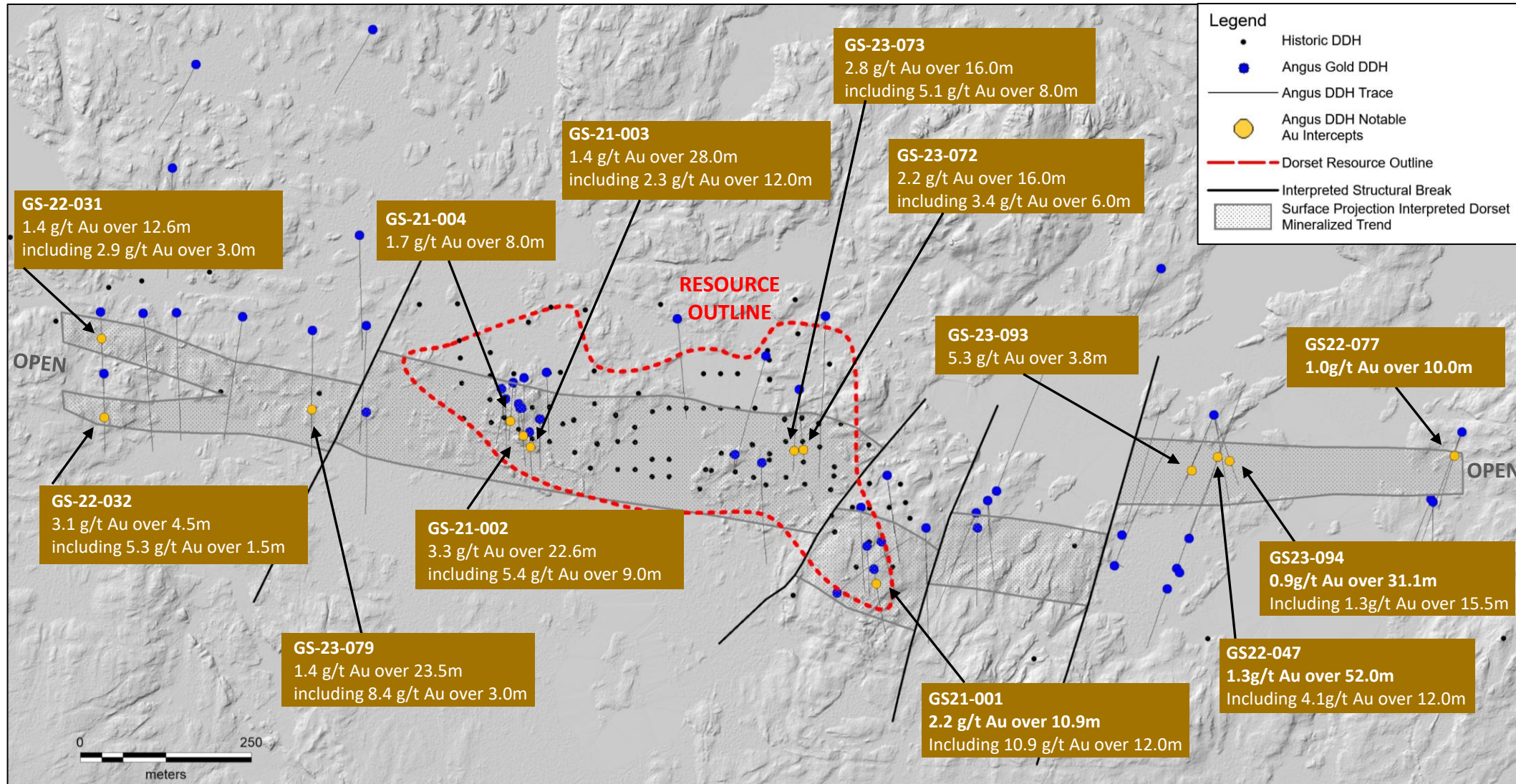
Deposit	Company	Size	Average Grade
Homestake	Barrick	+42 Moz	~ 8.0 g/t
Meliadine	Agnico Eagle	+6 Moz	~ 6.0 g/t
Musselwhite	Newmont	+6 Moz	~ 5.5 g/t
Back River	B2 Gold	+6 Moz	~ 6.0 g/t
Greenstone	Equinox Gold	+6 Moz	~ 1.3 g/t





# Dorset Trend – Strike Extension of Mineralized Zone

- Results to-date confirm the potential for **high-grade gold mineralization**
- The 2022 and 2023 drill program on the Dorset Gold deposit was **successful in more than doubling the strike length of gold mineralization outside of the historic resource area from 750 metres to 1.7 kilometres**
- Infill drilling** work to be done
- Dorset deformation zone is > 7kms in strike length with a **dozen priority 1 exploration targets** from ground geophysics programs remaining untested

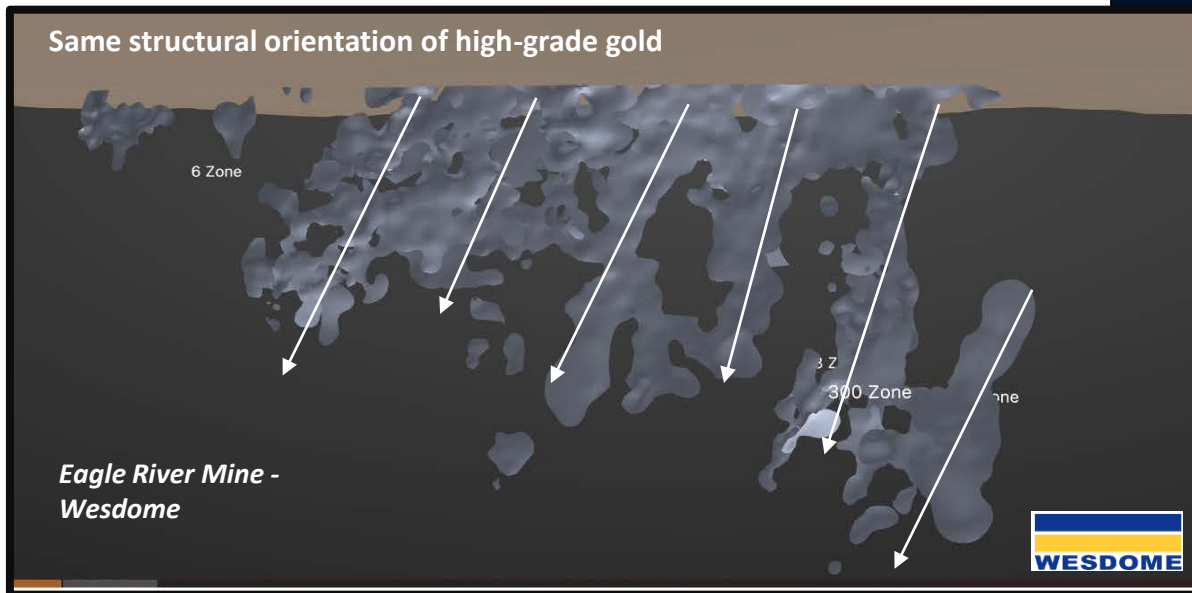


# Dorset Exploration Targets

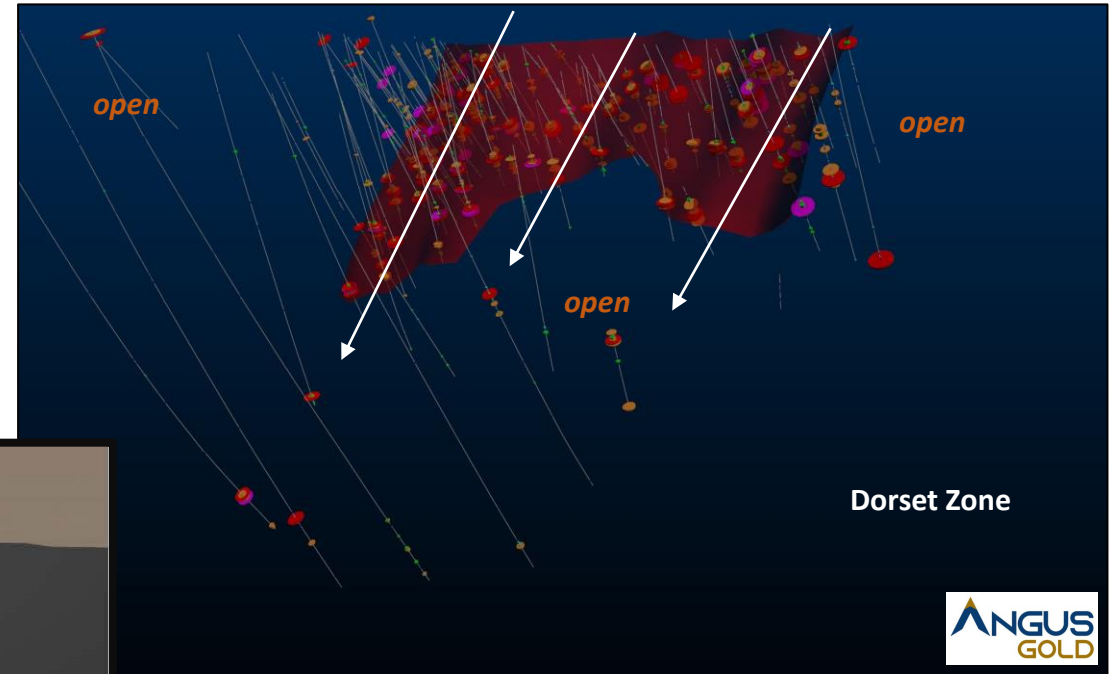
## Dorset Trend

2024 drill program to focus on high grade resource expansion and continue to test east & west of the Dorset deposit

## Wesdome Gold Mines



## Angus Gold

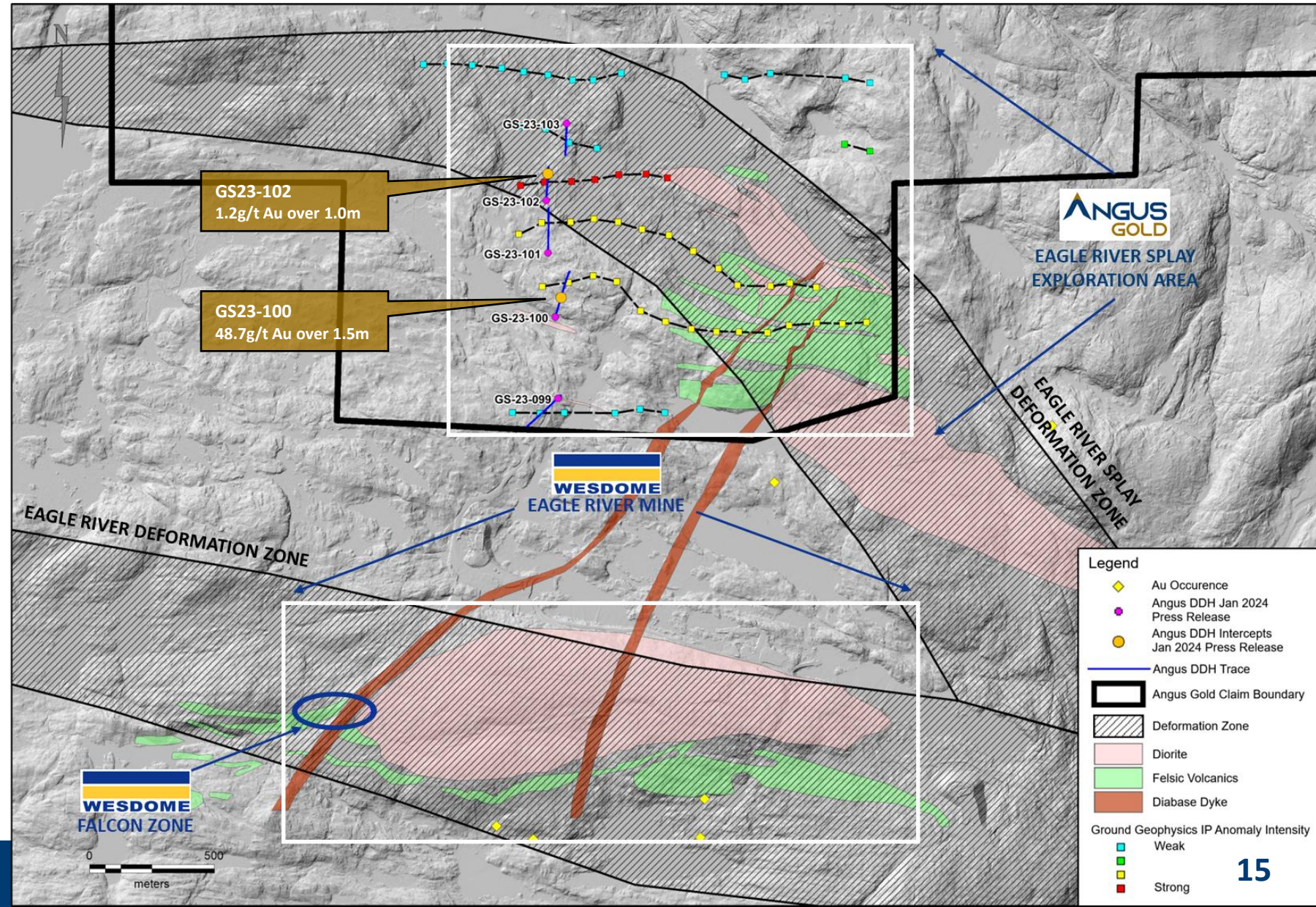


- Potential for high-grade gold discovery
- 7kms of under-explored strike length



# Eagle River Splay Exploration Area

- Results from first phase of drilling indicate **high-grade gold is present** in the system with **GS23-100 intersecting 48.7 g/t Au over 1.5m**
- **Winter drill program will test priority gold targets** to the east where strong geophysical anomalies are associated with a splay of the Eagle River Deformation Zone that is host to Wesdome's Eagle River Mine
- Numerous historic surface samples **> 5 g/t Au** were collected in the exploration area
- **No historical drilling** has been completed in this area





# Golden Sky Project: Under-Explored Gold Trends

## BIF

- New Discovery
- Already defined 1km of strike length

## Dorset

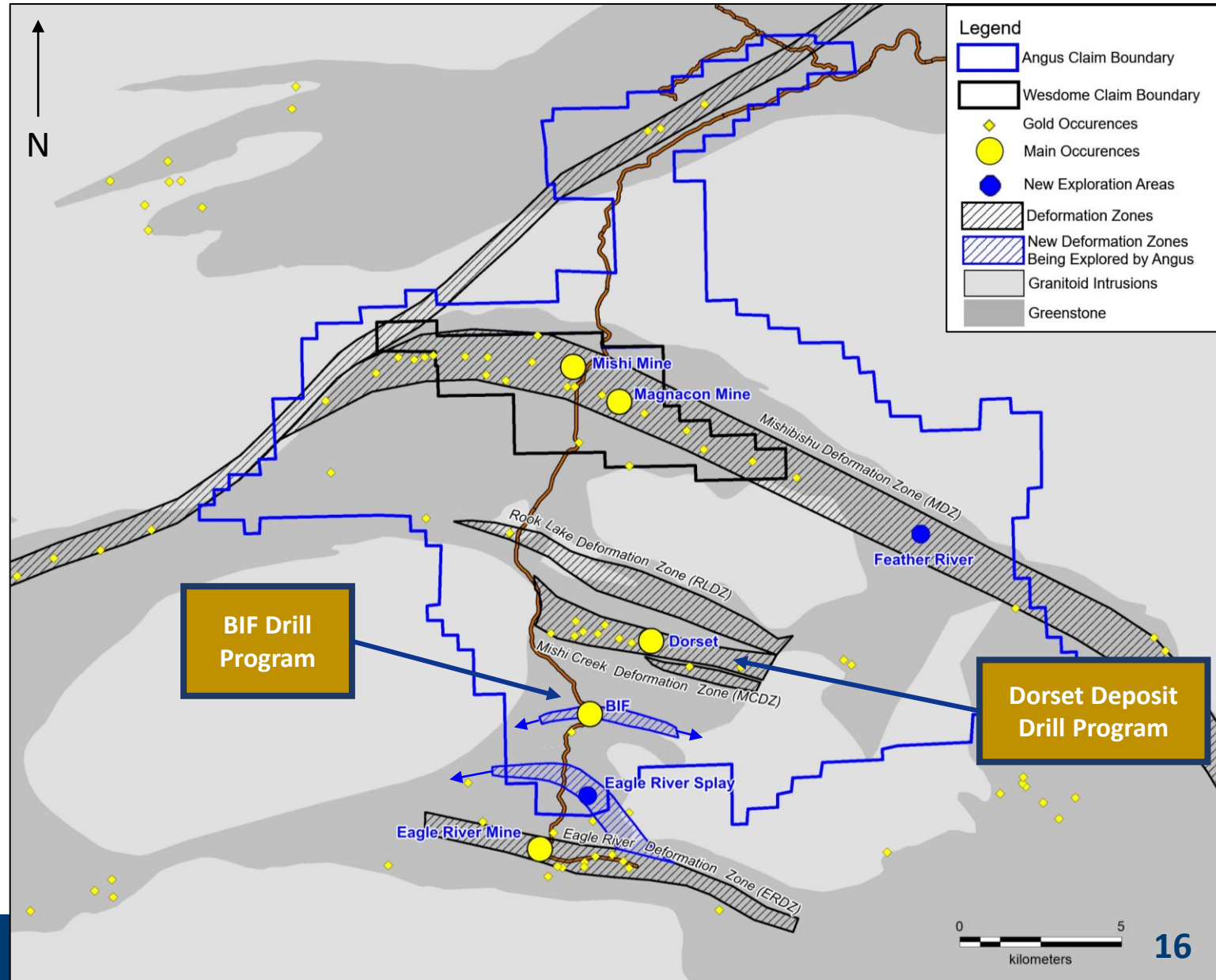
- Existing resource
- Expanded strike length
- Targeting high-grade material
- Excellent exploration potential with existing gold resource on the Dorset trend

## Eagle River Splay

- Identified unexplored shear zone
- Potential extension of the geologic host of Wesdome's Eagle River Mine
- Generated new exploration targets
- New high-grade Au Discovery in inaugural drill program

## Feather River

- Identified under explored portion of gold-hosting shear zone
- Currently generating new exploration targets





# Golden Sky Exploration Camp



- Exploration camp on site to increase productivity and reduce cost
- 24 person camp capacity
- Ability to expand for future programs







## HEAD OFFICE

18 King Street East, Suite 902  
Toronto, Ontario M5C 1C4  
Email: [info@angusgold.com](mailto:info@angusgold.com)

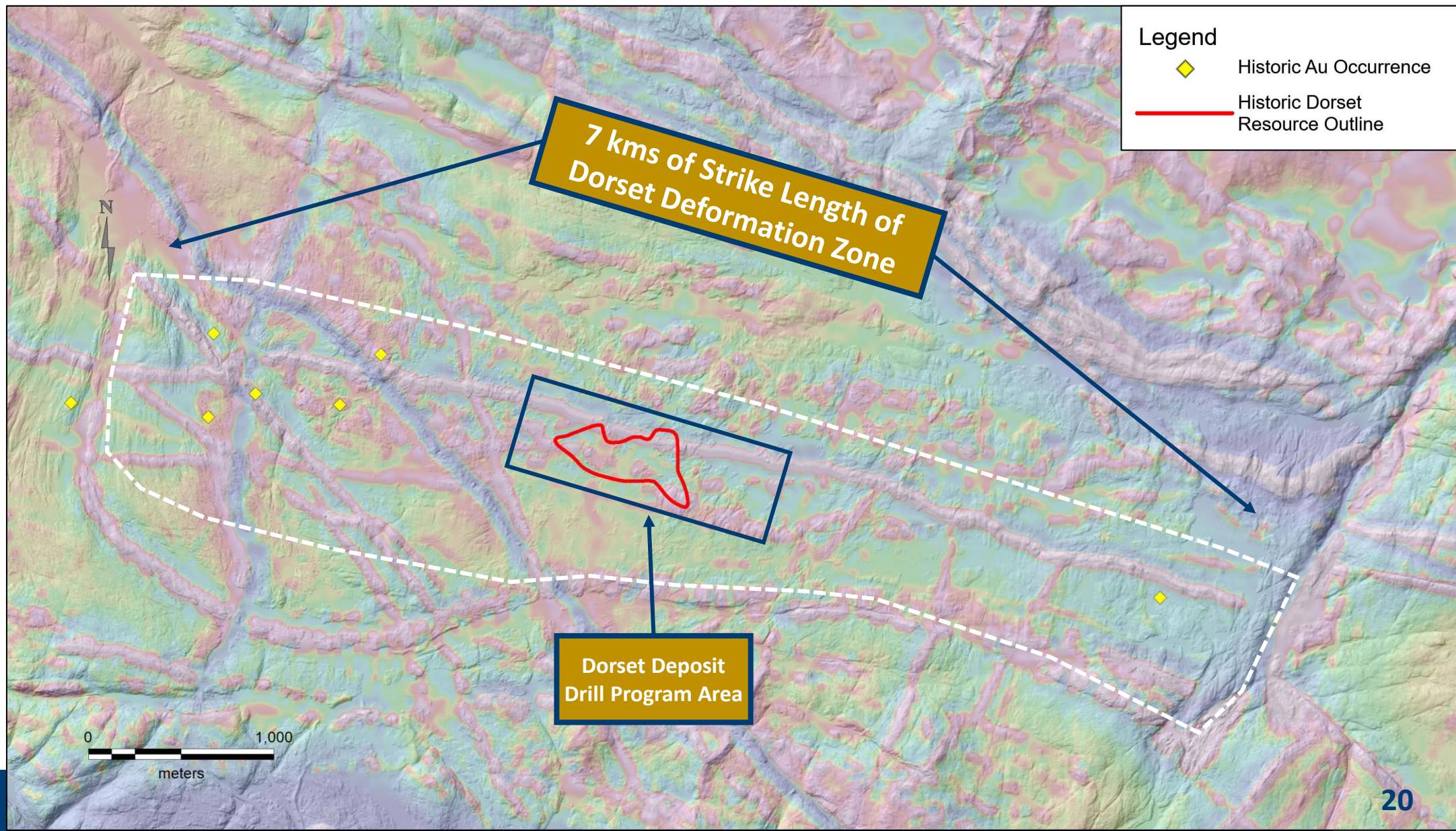
angusgold.com  
TSX-V: GUS  
OTCQB: ANGVF

Follow and join our email list

[\*Subscribe Now\*](#)

# Dorset Trend – Strike Extension of Mineralized Zone

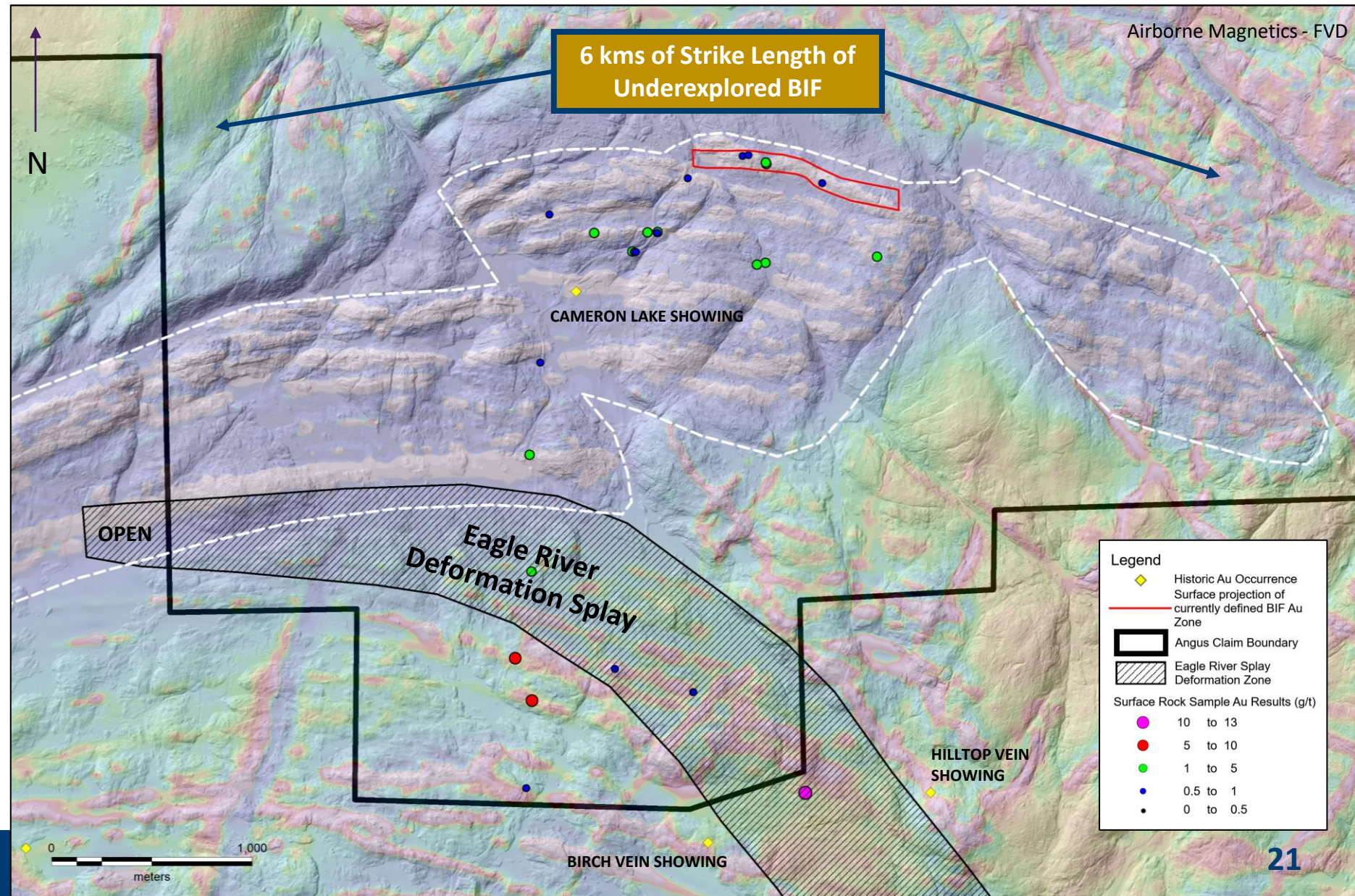
- Dorset deformation zone is > 7kms in strike length with a **dozen priority 1 exploration targets** from ground geophysics programs remaining untested
- Numerous historic Au showings present within the deformation zone





# BIF and Eagle River Exploration Targets

- Iron Formation-hosted gold deposits include world-class, high-grade examples such as Musselwhite (Newmont); Lupin, Back River (B2Gold); Meadowbank (Agnico-Eagle)
- The iron formation has seen little historic exploration
- 3D-IP covers entire 6 kms of strike length of the BIF
- **Eagle River Splay** drill plan is focused on testing our best targets in an area that is highly prospective with similar lithologies to the nearby Eagle River Mine
- **No historic drilling** in the area – in search of a brand- new Au zone





# BIF and Eagle River IP Grids Completed



- 3D-IP covers entire 6kms of strike length of the BIF
- Remained of the BIF is largely unexplored
- Eagle River Splay drill plan is focused on testing our best targets in an area that is highly prospective with similar lithologies to the nearby Eagle River Mine
- No historic drilling in the area
- Looking for a brand-new Au zone

